



*SIMPLE, SMART  
AND POWERFUL*

# 3-AXIS MACHINING CENTERS

Versatile units for any machine requirement

**THE  
AGILE  
ASSISTANT  
FOR  
MULTI-  
FACETED  
MILLING**



# PARTNERS FOR DOERS

## CNC machines since 1968

At HURCO® we develop and produce CNC machining centers to satisfy any requirement. As a manufacturer with more than 50 years of experience in the CNC sector, we have a precise appreciation of your own unique production and manufacturing requirements. Get the most out of your production with our versatile machining centers – from the space- and money-saving entry-level model with three axes to 4-axis performers and 5-axis machining centers for precise milling.

Our approach is shaped by experience, garnered in partnerships extending over many years with an array of clients representing a variegated range of manufacturing sectors. This is why each HURCO® machine tool has been optimized to satisfy your company's diverse requirements. We source the components from premium brands and suppliers who have earned our confidence. Our own processes conform to the most stringent quality criteria, while our quality management boasts ISO 9001:2015 certification.

## With expertise and passion

HURCO® is one of the largest international manufacturers of high-performance CNC machining centers. For more than 50 years, our high-quality products have been used in the aerospace and aeronautics, machine construction, medical technology, power and energy, transport and computer technology sectors around the globe.

At HURCO® you benefit from the unbeatable combination of machine and control expertise. Our MAX®5 control system is an in-house development designed to reduce your training and programming times to a minimum. Your questions about our machines, their control system, maintenance and repair will be answered by your personal contact at HURCO® Werkzeugmaschinen GmbH.

# TECHNICAL SPECIFICATIONS

## UNIVERSAL UNITS

Designation	VM 10i	VM 10i <sup>Plus</sup>	VM 15Di	VM 20i	VM 20i <sup>Plus</sup>	VM 30i	VM 30i <sup>Plus</sup>
Travel distances							
X-axis (mm)	660	660	762	1,016	1,016	1,270	1,270
Y-axis (mm)	406	406	407	508	508	508	508
Z-axis (mm)	508	508	508	508	508	508	508
Machine capacity							
Spindle nose to table (mm)	102 - 610	102 - 610	102 - 610	102 - 610	102 - 610	102 - 610	102 - 610
Clamped table surface L x W (mm)	762 x 406	762 x 406	900 x 406	1,168 x 508	1,168 x 508	1,321 x 508	1,321 x 508
Table load, uniform distribution (kg)	1,500	1,500	1,500	1,800	1,800	1,800	1,800
Main spindle							
Spindle taper	SK40	SK40	SK40	SK40	SK40	SK40	SK40
Power-transfer layout	Belt drive	Belt drive	Direct drive	Belt drive	Belt drive	Belt drive	Belt drive
Max. spindle speed (rpm)	10,000	12,000	12,000	10,000	12,000	10,000	12,000
Spindle power (kW)	11	11	17	15	15	15	15
Spindle torque (Nm)	74	61	107	99	82	99	82
Feed							
X/Y/Z-axis, rapid traverse (m/min)	28/28/28	28/28/28	36/36/30	28/28/28	28/28/28	28/28/28	28/28/28
Tool changer							
Magazine capacity/optional	24	24	24	24	24	24	24
Max. tool diameter (mm)	80	80	80	80	80	80	80
Diameter with empty pockets (mm)	120	120	120	120	120	120	120
Max. tool length (mm)	250	250	250	250	250	250	250
Max. tool weight (kg)	7	7	7	7	7	7	7
Other data							
Air supply (bar)	7	7	7	7	7	7	7
Electrical power connection (kVA)	15	16	24	20	21	20	21
Machine weight (kg)	2,850	2,850	3,360	4,150	4,150	4,250	4,250
Required floor space L x W x H (mm) (incl. chip conveyor/door opening space)	3,264 x 2,930 x 2,564	3,264 x 3,384 x 2,564	3,501 x 3,541 x 2,868	3,722 x 3,312 x 2,542	3,722 x 3,312 x 2,542	4,086 x 3,312 x 2,543	4,086 x 3,312 x 2,543
Coolant tank capacity (l)	62	108	200	122	200	122	200



PERFORMERS

SPRINTERS

VMX 24i	VMX 24Di	VMX 30i	VMX 30Di	VMX 42i	VMX 42Di	VMX 50i	VMX 50Di	VMX 60i	VMX 6030i	VMX 60Di	VMX 64i	VMX 84i	VM 10HSi <sup>PLUS</sup>	VMX 24HSi	VMX 30HSi	VMX 42HSi
610	610	762	762	1,067	1,067	1,270	1,270	1,524	1,524	1,524	1,625	2,135	660	610	762	1,067
508	508	508	508	610	610	660	660	660	762	660	864	865	407	508	508	610
610	610	610	610	610	610	610	610	610	610	610	762	762	508	610	610	610
152 - 762	152 - 762	152 - 762	125 - 735	152 - 762	125 - 645	101 - 711	101 - 711	102 - 711	101 - 711	102 - 711	127 - 890	127 - 887	102 - 610	152 - 762	152 - 762	152 - 762
760 x 510	760 x 510	1,020 x 510	1,020 x 510	1,270 x 610	1,270 x 610	1,500 x 660	1,500 x 660	1,680 x 660	1,680 x 762	1,680 x 660	1,676 x 889	2,185 x 865	762 x 406	760 x 510	1,020 x 510	1,270 x 610
1,500	1,500	1,500	1,500	1,750	1,750	2,000	1,818	2,000	2,000	2,000	2,722	2,270	1,500	1,500	1,500	1,750
SK40	SK40	SK40	SK40	SK40	SK40	SK40/SK50	SK40	SK40/SK50	SK40/SK50	SK40	SK40/SK50	SK40   SK50	HSK40	HSK63A	HSK63A	HSK63A
Belt drive	Direct drive	Belt drive	Direct drive	Belt drive	Direct drive	Belt drive	Direct drive	Belt drive	Belt drive	Direct drive	Belt drive	Belt drive	Motor spindle	Motor spindle	Motor spindle	Motor spindle
12,000	15,000	12,000	15,000	12,000	15,000	12,000 (SK40)/ 8,000 (SK50)	15,000	12,000 (SK40)/ 8,000 (SK50)	12,000 (SK40)/ 8,000 (SK50)	15,000	12,000 (SK40)/ 8,000 (SK50)	12,000 (SK40)/ 8,000 (SK50)	20,000/ 30,000	20,000	18,000	20,000
9	9	13,4	15	18	15	18 (SK40)/ 22 (SK50)	22	18 (SK40)/ 22 (SK50)	18 (SK40)/22 (SK50)	22	18 (SK40)/22 (SK50)	18 (SK40)/ 22 (SK50)	9	35	35	35
95	57	214	96	239	96	239 (SK40)/ 353 (SK50)	140	239 (SK40)/ 353 (SK50)	239 (SK40)/ 353 (SK50)	140	239 (SK40)/ 353 (SK50)	239 (SK40)/ 353 (SK50)	7/5	119	119	119
38/38/32	45/45/40	38/38/32	38/38/32	38/38/32	38/38/32	32/32/24	32/32/24	32/32/24	32/32/24	45/45/40	18/18/13,5	18/18/13,5	28/28/28	45/45/40	45/45/40	45/45/40
30	30	30/40/60	30/40/60	30/40/60	30/40/60	30/40/60 (SK40)/ 30 (SK50)	30/40/60	30/40/60 (SK40)/ 30 (SK50)	40/60 (SK40)/ 30 (SK50)	30/40/60	30/40/96 (SK40)/32 (SK50)	40 (SK40)/ 32 (SK50)	30	30	30/40	40
80	80	80/76	80/76	80/76	80/76	80/75 (SK40)/ 125 (SK50)	80/76	80/75 (SK40)/ 125 (SK50)	75 (SK40)/ 120 (SK50)	80/75	80/76/95 (SK40)/125 (SK50)	75 (SK40)/ 125 (SK50)	60	80	80/76	75
130	130	130	130/150	130	130	130 (SK40)/ 170 (SK50)	130/130	130 (SK40)/ 170 (SK50)	130 (SK40)/ 150 (SK50)	130	130/130/125 (SK40)/220 (SK50)	125 (SK40)/ 220 (SK50)	120	130	130	130
300	300	300	300	300	300	300	300	300	300	300	300/300/280 (SK40)/300 (SK50)	300	250	300	300	300
7	7	7	7	7	7	7 (SK40)/ 15 (SK50)	7	7 (SK40)/ 15 (SK50)	7 (SK40)/ 15 (SK50)	7	7 (SK40)/ 15 (SK50)	7 (SK40)/ 15 (SK50)	4	7	7	7
7	7	7	7	7	7	7	7	7	7	7	7	7	7	7	7	7
19	26	26	27	33	31	34	38	33	35	39	25 (SK40)   31 (SK50)	35	15	47	46	47
4,750	4,748	5,050	5,400	6,850	6,500/6,809	7,650 (SK40)   9,150 (SK50)	9,080	8,650 (SK40)   9,850 (SK50)	11,450 (SK40)   11,700 (SK50)	9,800	14,600/15,000/ 15,500 (SK40)   14,600 (SK50)	17,000	3,150	4,900	5,000	7,100
3,930 x 4,041 x 2,725	3,930 x 4,046 x 2,994	3,939 x 4,059 x 2,724	3,939 x 4,049 x 3,011	4,572 x 3,708 x 2,945	4,572 x 3,717 x 2,958	5,059 x 3,921 x 3,240 (SK40)   5,049 x 4,378 x 3,014 (SK50)	5,066 x 4,485 x 3,216	5,607 x 3,936 x 3,240	5,606 x 4,085 x 3,345	5,607 x 3,936 x 3,240	6,338 x 4,496 x 3,335	7,574 x 4,450 x 3,310	3,204 x 3,395 x 2,564	3,930 x 4,041 x 2,773	3,940 x 4,042 x 2,799	4,600 x 3,718 x 2,982
367	367	366	367	484	484	894	894	894	929	894	836	867	107	367	367	484

WHAT  
THE  
DOERS  
ARE SAYING



COMPLEXITY MADE  
SIMPLE

WORTH ITS  
WEIGHT IN GOLD

# VMi SERIES

UNIVERSAL UNITS – FOR MULTI-  
FACETED REQUIREMENTS

THE PERFECT  
ENTRY LEVEL



## VM 10i

Travel distances X-/Y-/Z-axes (mm)	660/406/508
X-/Y-/Z-axis rapid traverse (m/min)	28/28/28
Table load, uniform distribution (kg)	1,500
Max. spindle speed (rpm)	10,000

Space- and money-saving HURCO® 3-axis machining centers are perfect for a wide range of requirements – from high metal removal rates to dynamic machining.

**VM 10i | VM 10i PLUS | VM 15Di | VM 20i | VM 20i PLUS | VM 30i | VM 30i PLUS**

- Modest floor space, massive working area
- Solid cast iron machine frame
- High rigidity and stability of the linear guides in all three axes
- Tool holder SK40
- Latest-generation Yaskawa drives
- Laterally mounted, electrically driven tool changer with arm



#### VM10i PLUS

Travel distances X-/Y-/Z-axes (mm)	660/406/508
X-/Y-/Z-axis rapid traverse (m/min)	28/28/28
Table load, uniform distribution (kg)	1,500
Max. spindle speed (rpm)	12,000



#### VM15Di

Travel distances X-/Y-/Z-axes (mm)	762/407/508
X-/Y-/Z-axis rapid traverse (m/min)	36/36/30
Table load, uniform distribution (kg)	1,500
Max. spindle speed (rpm)	12,000



#### VM20i

Travel distances X-/Y-/Z-axes (mm)	1,016/508/508
X-/Y-/Z-axis rapid traverse (m/min)	28/28/28
Table load, uniform distribution (kg)	1,800
Max. spindle speed (rpm)	10,000



#### VM20i PLUS

Travel distances X-/Y-/Z-axes (mm)	1,016/508/508
X-/Y-/Z-axis rapid traverse (m/min)	28/28/28
Table load, uniform distribution (kg)	1,800
Max. spindle speed (rpm)	12,000



#### VM30i

Travel distances X-/Y-/Z-axes (mm)	1,270/508/508
X-/Y-/Z-axis rapid traverse (m/min)	28/28/28
Table load, uniform distribution (kg)	1,800
Max. spindle speed (rpm)	10,000



#### VM30i PLUS

Travel distances X-/Y-/Z-axes (mm)	1,270/508/508
X-/Y-/Z-axis rapid traverse (m/min)	28/28/28
Table load, uniform distribution (kg)	1,800
Max. spindle speed (rpm)	12,000

# VMXi SERIES

## PERFORMERS – WHEN YOU NEED HIGH PERFORMANCE



**VMX 24i**

Travel distances X-/Y-/Z-axes (mm)	610/508/610
X-/Y-/Z-axis rapid traverse (m/min)	38/38/32
Table load, uniform distribution (kg)	1,500
Max. spindle speed (rpm)	12,000



**VMX 30i**

Travel distances X-/Y-/Z-axes (mm)	762/508/610
X-/Y-/Z-axis rapid traverse (m/min)	38/38/32
Table load, uniform distribution (kg)	1,500
Max. spindle speed (rpm)	12,000

*FOR STABLE PERFORMANCE*

The HURCO® 3-axis machining centers for maximum precision and powerful performance.

**VMX 24i | VMX 30i | VMX 42i | VMX 50i | VMX 60i | VMX 6030i | VMX 64i | VMX 84i**

- Modest floor space, massive working area
- Spindle speed 12,000 rpm
- Solid cast iron machine frame
- Tool holder SK40/SK50
- Latest-generation Yaskawa drives
- Laterally mounted, electrically driven tool changer with arm



#### VMX 42i

Travel distances X-/Y-/Z-axes (mm)	1,067/610/610
X-/Y-/Z-axis rapid traverse (m/min)	38/38/32
Table load, uniform distribution (kg)	1,750
Max. spindle speed (rpm)	12,000



#### VMX 50i

Travel distances X-/Y-/Z-axes (mm)	1,270/660/610
X-/Y-/Z-axis rapid traverse (m/min)	32/32/24
Table load, uniform distribution (kg)	2,000
Max. spindle speed (rpm)	12,000 (SK40)   8,000 (SK50)



#### VMX 60i

Travel distances X-/Y-/Z-axes (mm)	1,524/660/610
X-/Y-/Z-axis rapid traverse (m/min)	32/32/24
Table load, uniform distribution (kg)	2,000
Max. spindle speed (rpm)	12,000 (SK40)   8,000 (SK50)



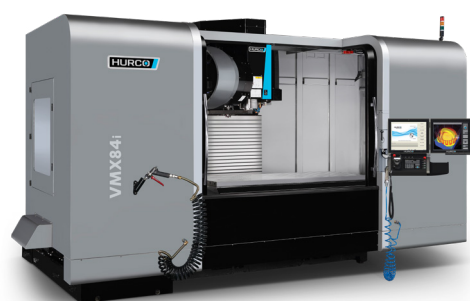
#### VMX 6030i

Travel distances X-/Y-/Z-axes (mm)	1,524/ 762/ 610
X-/Y-/Z-axis rapid traverse (m/min)	32/32/24
Table load, uniform distribution (kg)	2,000
Max. spindle speed (rpm)	12,000 (SK40)   8,000 (SK50)



#### VMX 64i

Travel distances X-/Y-/Z-axes (mm)	1,625/864/762
X-/Y-/Z-axis rapid traverse (m/min)	18/18/13,5
Table load, uniform distribution (kg)	2,722
Max. spindle speed (rpm)	12,000 (SK40)   8,000 (SK50)



#### VMX 84i

Travel distances X-/Y-/Z-axes (mm)	2,135/865/762
X-/Y-/Z-axis rapid traverse (m/min)	18/18/13,5
Table load, uniform distribution (kg)	2,270
Max. spindle speed (rpm)	12,000 (SK40)   8,000 (SK50)



# VMX Di SERIES

## PERFORMERS – WITH EVEN BETTER PERFORMANCE

EXTREMELY  
WELL-DESIGNED



### VMX 24Di

Travel distances X-/Y-/Z-axes (mm)	610/508/610
X-/Y-/Z-axis rapid traverse (m/min)	45/45/40
Table load, uniform distribution (kg)	1,500
Max. spindle speed (rpm)	15,000

For even higher performance, the VMX Di models are equipped with a 15,000 inline spindle that provides excellent surface quality, faster tool changes and particularly high thermal stability.

### VMX 24Di | VMX 30Di | VMX 42Di | VMX 50Di | VMX 60Di

- Modest floor space, massive working area
- Spindle speed 15,000 rpm
- Solid cast iron machine frame
- Tool holder SK40
- Latest-generation Yaskawa drives
- Laterally mounted, electrically driven tool changer with arm



#### VMX30Di

Travel distances X-/Y-/Z-axes (mm)	762/508/610
X-/Y-/Z-axis rapid traverse (m/min)	38/38/32
Table load, uniform distribution (kg)	1,500
Max. spindle speed (rpm)	15,000



#### VMX42Di

Travel distances X-/Y-/Z-axes (mm)	1,067/610/610
X-/Y-/Z-axis rapid traverse (m/min)	38/38/32
Table load, uniform distribution (kg)	1,750
Max. spindle speed (rpm)	15,000



#### VMX50Di

Travel distances X-/Y-/Z-axes (mm)	1,270/660/610
X-/Y-/Z-axis rapid traverse (m/min)	32/32/24
Table load, uniform distribution (kg)	1,818
Max. spindle speed (rpm)	15,000



#### VMX60Di

Travel distances X-/Y-/Z-axes (mm)	1,524/660/610
X-/Y-/Z-axis rapid traverse (m/min)	45/45/40
Table load, uniform distribution (kg)	2,000
Max. spindle speed (rpm)	15,000





# VMX HSi SERIES

## SPRINTERS - WHEN SPEED IS WHAT YOU NEED

HIGH-SPEED  
MILLING



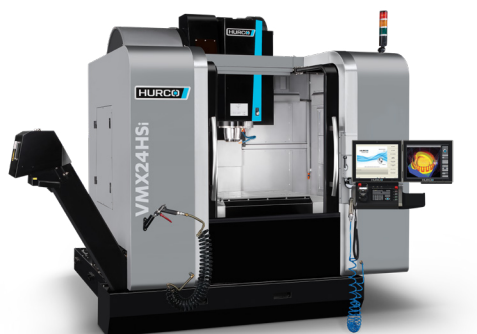
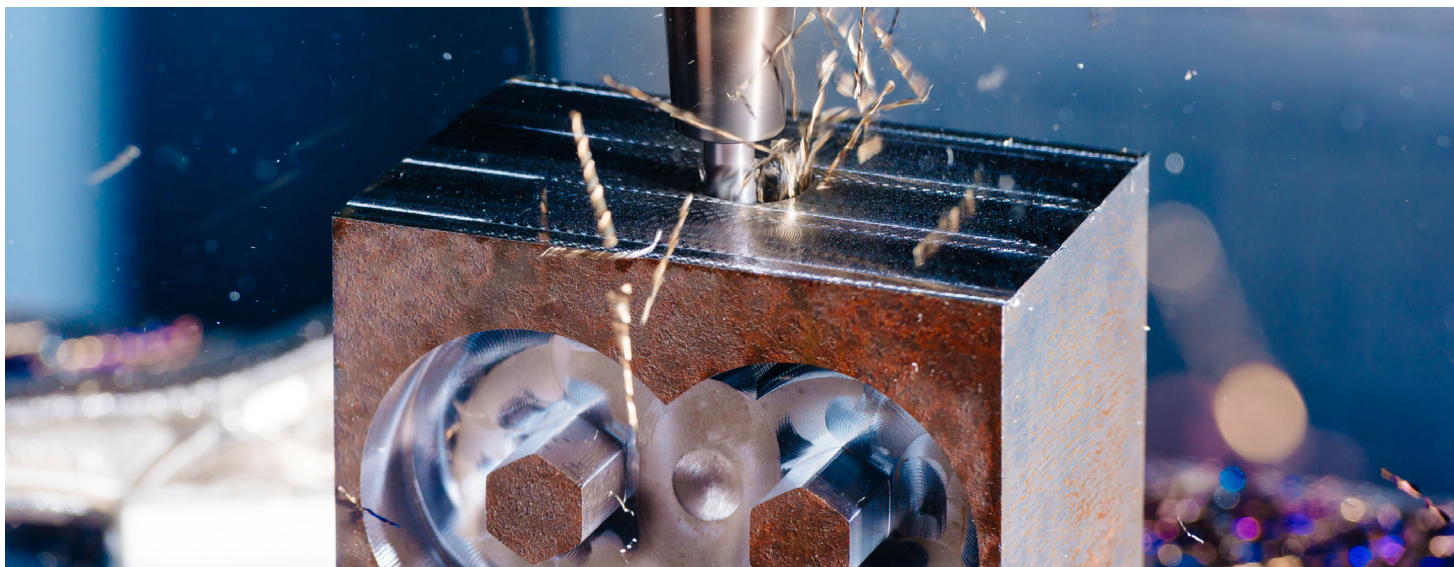
### VM10HSi PLUS

Travel distances X-/Y-/Z-axes (mm)	660/407/508
X-/Y-/Z-axis rapid traverse (m/min)	28/28/28
Table load, uniform distribution (kg)	1,500
Max. spindle speed (rpm)	20,000/30,000

The HURCO 3-axis machining centers for high-speed machining.  
First-class components and solid construction.

### VM 10HSi PLUS | VMX 24HSi | VMX 30HSi | VMX 42HSi

- Modest floor space, massive working area
- Solid cast iron machine frame
- High rigidity and stability of the linear guides in all three axes
- Latest-generation Yaskawa drive



#### VMX 24HSi

Travel distances X-/Y-/Z-axes (mm)	610/508/610
X-/Y-/Z-axis rapid traverse (m/min)	45/45/40
Table load, uniform distribution (kg)	1,500
Max. spindle speed (rpm)	20,000



#### VMX 30HSi

Travel distances X-/Y-/Z-axes (mm)	762/508/610
X-/Y-/Z-axis rapid traverse (m/min)	45/45/40
Table load, uniform distribution (kg)	1,500
Max. spindle speed (rpm)	18,000



#### VMX 42HSi

Travel distances X-/Y-/Z-axes (mm)	1,067/610/610
X-/Y-/Z-axis rapid traverse (m/min)	45/45/40
Table load, uniform distribution (kg)	1,750
Max. spindle speed (rpm)	20,000

# FUNCTIONS WITH ADDED VALUE

## EASY MILLING WITH YOUR CUSTOMIZED MACHINE

You can individually and flexibly equip our machining centers with a wide range of machine options – for customized support in your production scenarios.



### Workpiece position detection

Increase your productivity with measuring probes mounted directly in the spindle. The workpiece zero point is determined electronically both in manual setup mode and fully automatically during the program run. Reduces machine downtime and the risk of manual adjustment errors.

- Determination of workpiece zero point and rotation:
  - Edge
  - Corner
  - Drill hole
  - Cylinder
  - Rectangular recess
  - Cuboid
- Measuring the workpiece

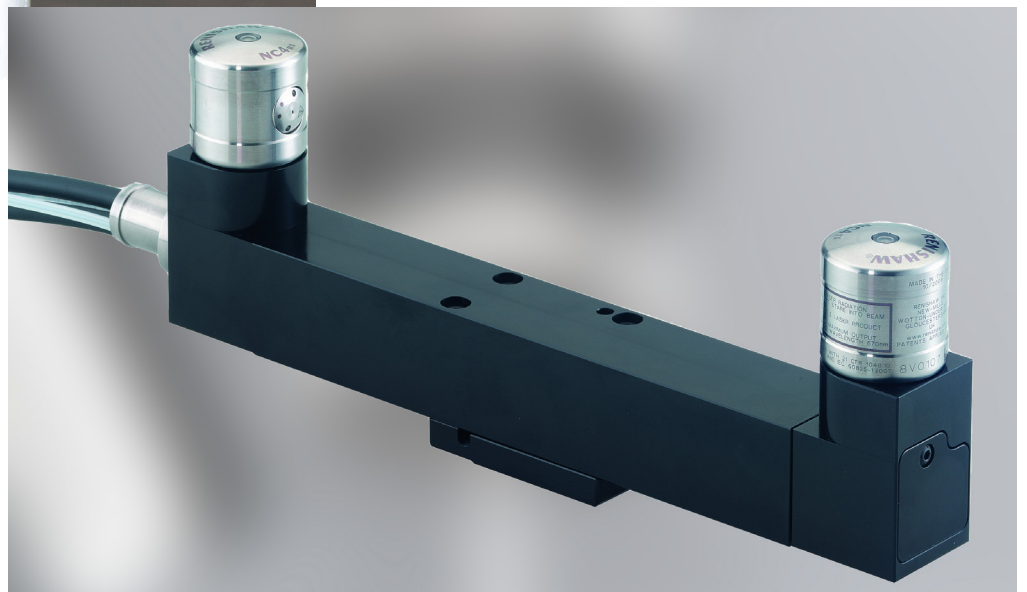




## Tool setting with touch probe

Get extra precision with the electronic measuring system for tools. A control function for tool breakage with optional use of replacement tools is also integrated.

- Determination of tool length and diameter by exact measurement
- Tool breakage control over length and – if tool defective – use of a replacement tool
- Tool wear control and compensation on both length and diameter



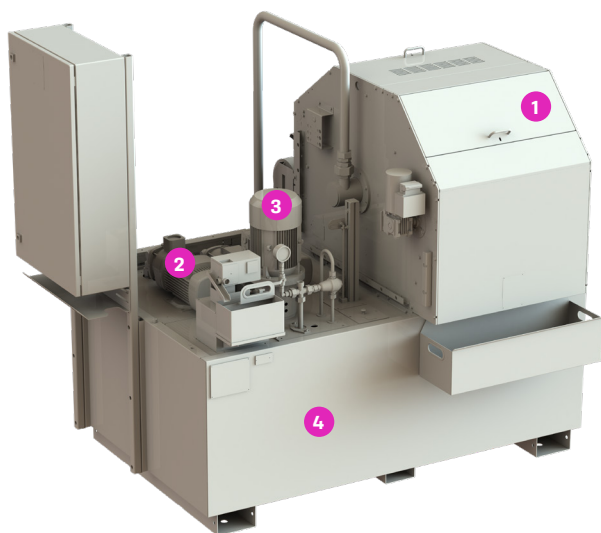
## Tool setting with laser

Maximize the accuracy of tool setting using a laser. This option is recommended for small and sensitive tools in particular.

- Determination of tool length and diameter by exact measurement
- Tool breakage control across length and – if tool defective – use of a replacement tool
- Tool wear control and compensation on both length and diameter

## Production package

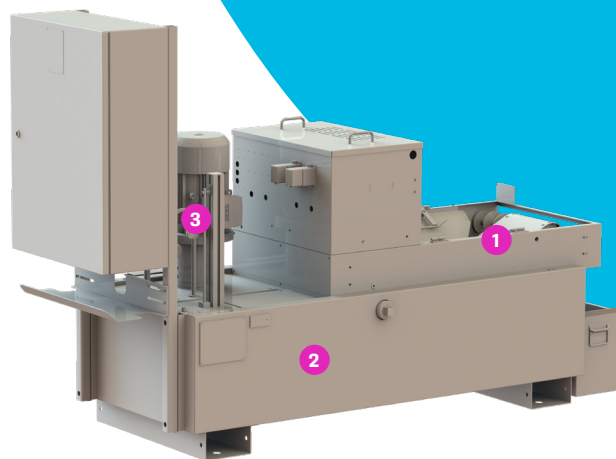
The production package includes a chip conveyor for reliable coolant cleaning and chip flushing, providing you with optimal support for the maintenance of your machine. A must-have for machining cast iron, brass, aluminum and comparable materials.



- 1 Paper belt filter
- 2 Pumps for coolant  
Supply from outside and chip flushing
- 3 20 bar pump for internal coolant supply  
(optional: up to 70 bar)
- 4 Additional coolant tank (up to 1,350 l)

## Bypass filtration system for ICF

Effectively reduce the maintenance effort for your ICF system with a gravity belt filter for cleaning the cooling lubricants. Highly recommended for machining cast iron, brass, aluminum and comparable materials.



- 1 Gravity paper belt filter
- 2 280 l coolant tank
- 3 20 bar pump for internal coolant supply  
(optional: up to 70 bar)

## Rotary tables

With the rotary tables we offer, you can add a 4th or 5th axis to your 3-axis machining center.



Rotary table (mm)	MR 120	MR 160	GT 200	GT 250	GT 320	TT 101	TT 150	TT 200	TT 251	TT 321
Face plates Ø (mm)	128	165	200	250	320	110	150	200	250	320
Center height (mm)	120	140	140	180	225	140	150	180	225	255
Spindle passage (mm)	32	40	45	70	105	32	40	40	70	110



# EVEN MORE OPTIONS FOR DOERS

## **Cooling air via coolant nozzles:**

Choice of cooling emulsion or cooling air via coolant nozzles. Programmable as "Coolant 2" or via M function

## **Cooling air via spindle**

As above, but supplied through the spindle. Prerequisite: Optional "internal coolant feed (ICF)"

## **Rotoclear**

Rotating viewing window for a clear view of the workpiece when working with coolant emulsion

## **Direct linear scale**

Position determination by linear scale instead of rotary encoders



THE CONTROL  
SYSTEM BY DOERS  
FOR DOERS

# MAX<sup>®</sup> 5

HURCO<sup>®</sup> CNC control combines powerful MAX<sup>®</sup>5 hardware with user-friendly WinMax software and optional features such as Solid Model Import.

## YOUR BENEFITS AT A GLANCE

- **User-friendly operation.** Perfection can be this easy – with intuitive plain text conversational programming, you can intuitively set the control system according to your requirements.
- **Minimal time required.** Use of the control system can be learned quickly without any programming knowledge at all. It optimally supports your employees in achieving faster programming times with short, clearly arranged programs.
- **Individual configuration.** Choose from a variety of features (e. g. Solid Model Import) specific to your needs to ensure that your HURCO<sup>®</sup> control system perfectly meets your needs.
- **High profitability.** Even the production of highly complex parts and a higher capacity utilization of your operation can be mastered in no time.
- **Measurable productivity.** The functions of the control system and numerous automation features demonstrably increase your capacity.
- **Greater employee satisfaction.** Automate processes and give your employees more time for more complex activities.



# MAX® 5 CONTROL SYSTEM

## A dream for users from design to result.

With MAX® 5, you can process sketches and drawings, read solid models for program creation, and program directly on the machine without an additional programming station.

## Tailored to your needs in every respect

- Ergonomic, rugged design
- Pull-out keyboard with adjustable inclination
- Height-adjustable, retractable console for minimal footprint<sup>1</sup>
- CAD/CAM support
- Solvent-resistant keyboard constructed in ABS polycarbonate
- Rotary override knobs in brushed stainless steel



The versatility of the HURCO® control system makes complex work a cinch. The ability to quickly import data meshes with the multitude of machine options.

Gröbner Fertigungs GmbH

# SOLID MODEL IMPORT

**Simply gain greater flexibility.** With the advanced Solid Model Import function, you can import DXF and STEP data directly and import free-form surfaces as conversational data sets so that they can be directly produced on the machine.

# WINMAX® 5 SOFTWARE

**Supported by the best.** For the maximum performance of your HURCO® machine, we developed WinMax®5, a software program that is aligned exactly with the performance data of our machine tools and your needs as the user.

## Spotlight on WinMax® 5

- **Clearly displayed.** Perform solid-model programming directly on the graphic display screen with simultaneous simulation of machining<sup>3</sup>
- **Supportive.** The software independently creates machining data sets based on automatically recognized contours and drilling patterns.<sup>2</sup>
- **Practical.** Recess and drill hole depths are automatically detected and stored in the data set.<sup>3</sup>

<sup>1</sup> Depending on model

<sup>2</sup> Only with Solid Model Import or DXF

<sup>3</sup> Only with Solid Model Import

## How does the feature benefit you?

- **Fast 3-axis, 4-axis and 5-axis machining.** Using Solid Model Import, you can program right at the control system – simply, with the help of the solid model.
- **Time-saving.** Import solid models right at the control system – without the hassle of creating 2D drawings with dimensions.
- **Better overview.** You can switch between the solid model for programming and the simulation of the generated machining in the graphic view or display both in overlapping form.

# THE AGILE ASSISTANT CLOSE TO YOU

Do you already use HURCO® solutions in your company, or are you interested in them and have questions? You will find the right answers and services from a single source.

## HURCO® - SERVICES

### Personal contacts for your region

Our regional contact persons are at your service to provide advice and assistance regarding your HURCO® machine or general questions – even long after the successful installation of your machining center. Simply reach out to us by email or phone.

Phone +49 89 905 094 - 0 | [info@hurco.de](mailto:info@hurco.de)  
Mon. – Fri. 7:30 a.m. – 4:00 p.m.

### Application advice

There is a dedicated hotline for your user questions.

Phone +49 89 905 094 - 66 | [awt@hurco.de](mailto:awt@hurco.de)  
Mon. – Fri. 8:00 a.m. – 4:00 p.m.

### Spare parts services & next day delivery

High spare parts availability at our Munich central warehouse and fast delivery of our spare parts means that your operation gets back up and running quickly from repair-related downtime. On request, we can also replace your old spindle with either a reconditioned or new spare part.

Phone +49 89 905 094 - 55 | [ersatzteile@hurco.de](mailto:ersatzteile@hurco.de)  
Mon. – Thurs. 8:00 a.m. – 5:00 p.m. | Fri. 8:00 a.m. – 4:00 p.m.

### Service

Our experienced service technicians will support you on site or via remote maintenance in the maintenance, care or repair of your HURCO® machine tools.

Phone +49 89 905 094 - 44 | [service@hurco.de](mailto:service@hurco.de)  
Mon – Thurs 7:00 a.m. – 5:00 p.m. | Fri. 7:00 a.m. – 4:00 p.m.

## Training & free tutorials

We give you the knowledge for getting the most out of your HURCO® machine and the MAX®5 control system – with customized on-site training for every user level and our free instructional videos on YouTube.



**HURCO® on YouTube:**  
@hurco-cnc-tooling-machines

## HURCO® Refurbished

You can regularly score real bargains from us with demo and used machines under attractive conditions – including a manufacturer's warranty.

**GET GOING**

# OUR SALES OFFICES - OUR PARTNERS



DEU

## Germany

HURCO Werkzeugmaschinen GmbH | Gewerbestraße 5a | 85652 Pliening, Germany | Tel. +49 89 905094 - 0 | [info@hurco.de](mailto:info@hurco.de) | [www.hurco.de](http://www.hurco.de)

BEL

## Belgium (Flanders)

Dijkink Machinery bv | Tel. +31 0418 662112  
[www.dijkinkmachinery.com](http://www.dijkinkmachinery.com)

BIH

## Bosnia and Herzegovina

Strojotehnika d.o.o. | Tel. +385 1 2042 526  
[www.strojotehnika.hr](http://www.strojotehnika.hr)

BGR

## Bulgaria

VEDI International Ltd. | Tel. +359 2 8514 546  
[www.vedi-international.com](http://www.vedi-international.com)

HRV

## Croatia

Strojotehnika d.o.o. | Tel. +385 1 2042 526/  
[www.strojotehnika.hr](http://www.strojotehnika.hr)

LVA

## Latvia

Machine Tool Center UAB | Tel. +370 37 291 567  
[www.mtcenter.lt](http://www.mtcenter.lt)

LIT

## Lithuania

Machine Tool Center UAB | Tel. +370 37 291 567  
[www.mtcenter.lt](http://www.mtcenter.lt)

MNE

## Montenegro

Strojotehnika d.o.o. | Tel. +385 1 2042 526  
[www.strojotehnika.hr](http://www.strojotehnika.hr)

NLD

## Netherlands

Dijkink Machinery bv | Tel. +31 0418 662112  
[www.dijkinkmachinery.com](http://www.dijkinkmachinery.com)

MKD

## North Macedonia

Strojotehnika d.o.o. | Tel. +385 1 2042 526  
[www.strojotehnika.hr](http://www.strojotehnika.hr)

AUT

## Austria

HURCO Werkzeugmaschinen GmbH | Tel. +49 89 905094-0  
[www.hurco.de](http://www.hurco.de)



POL

**Poland**

HURCO Sp. Z o.o. | Tel. +48 76 7442792  
[www.hurco.pl](http://www.hurco.pl)

PRT

**Portugal**

Wintech Trade 2 SA | Tel. +351 912 986 885 | [www.hurco.eu](http://www.hurco.eu)

ROU

**Romania**

Knuth-Allmetech SRL | Tel. +40 332 401995  
[www.allmetech.com](http://www.allmetech.com)

CHE

**Switzerland**

Convertero AG | Tel. +41 43 501 4140 | [www.convertero.ch](http://www.convertero.ch)

SRB

**Serbia**

Strojotehnika d.o.o. | Tel. +385 1 2042 526 | [www.strojotehnika.hr](http://www.strojotehnika.hr)

SVK

**Slovakia**

ITAX PRECISION s.r.o. | Tel. +420 469 318402 | [www.itax.cz](http://www.itax.cz)

SVN

**Slovenia**

Samo KAČ s.p. | Tel. +386 41 793795  
[www.kactrade.com](http://www.kactrade.com)

ESP

**Spain**

Ferrotall | Tel. +34 966 662296 | [www.ferrotall.com](http://www.ferrotall.com)

CZE

**Czech Republic**

ITAX PRECISION s.r.o. | Tel. +420 469 318402 | [www.itax.cz](http://www.itax.cz)

TUR

**Turkey**

Tezmaksan | Tel. +90 212 6746010 | [www.tezmaksan.com.tr](http://www.tezmaksan.com.tr)

HUN

**Hungary**

Single Product kft | Tel. +36 96 553091  
[www.singleproduct.hu](http://www.singleproduct.hu)

# 3-AXIS FROM A SINGLE SOURCE

SIMPLER. MORE  
ACCESSIBLE.  
HURCO.

HURCO Werkzeugmaschinen GmbH  
Gewerbestraße 5 a | 85652 Pliening, Germany  
Tel. +49 89 905094 0 | Fax +49 89 905094 90  
info@hurco.de | www.hurco.de

Version: 06/2024